

Fixed Attenuators

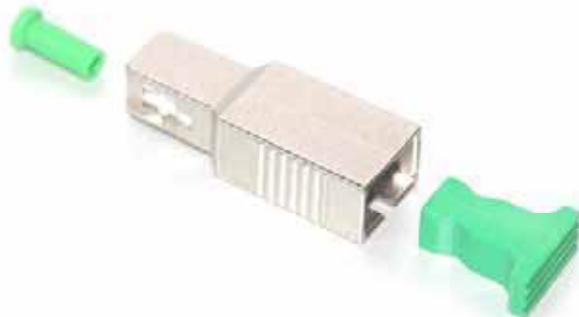
Brotechs single mode attenuators are used in communication systems to reduce optical power launched onto the photo detector. These high performance devices are designed to give accurate attenuation over a wide range of wavelengths. The plug type configuration allows ease of use functionality directly to the fibre patchcord, for insertion onto the adapter. Brotechs attenuators offer compact ruggedised packaging with sealed housings to alleviate risk of damage to expensive equipment.

Applications

- Telecommunication networks
- Fibre optic sensors
- Test and measurement
- CATV
- LAN and WAN
- FTTx

Features

- Plug-in type package
- Accurate attenuation
- Ultra low back reflection
- Broad wavelength band
- Available with LC, SC, ST, FC and MU packages
- Flat response over all wavelengths
- Environmentally Stable
- Quick Delivery
- RoHS compliant



Capability

Available with LC, SC, ST, FC and MU connector styles offering UPC or APC finish providing ultra low return loss. The Brotechs range of attenuators are fabricated in a world class facility fully equipped with clean rooms and state of the art measurement equipment.

Specifications

Connector type		LC,SC,ST,FC,MU
Attenuation	dB	1~30
Attenuation tolerance	dB	1~5± 0.5 6~30± 10%
Wavelength operation	nm	1310 and 1550
Thermal age	dB	PC=55 and APC=60
Operating temperature	°C	-40 ~ 85

Ordering Information

1030 — AT —	Attenuator Type	Attenuation Value
	1 : LC/PC Female& Male	05 : 5dB
	2 : SC/PC Female& Male	10 : 10dB
	3 : ST/PC Female& Male	15 : 15dB
	7 : FC/PC Female& Male	...
	9 : MU/PC Female& Male	
	A : LC/APC Female& Male	
	B : SC/APC Female& Male	
	D : FC/APC Female& Male	

