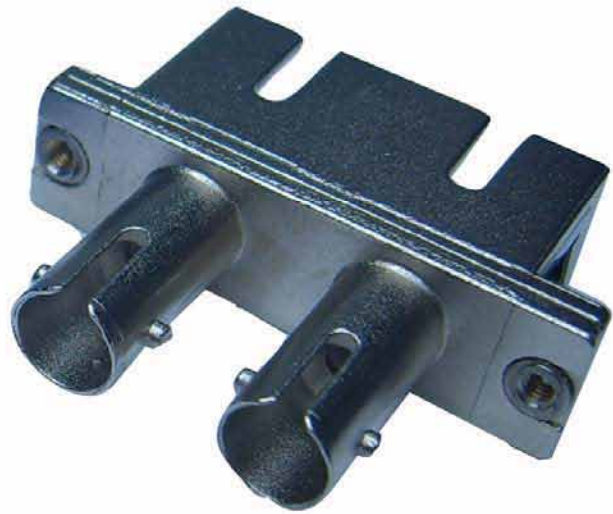
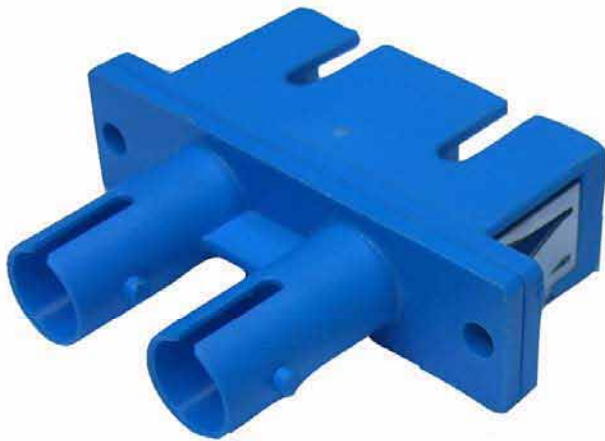


# Hybrid Adapters

These adapters are for changing from different connector styles with ferrule diameter of 2.5 mm. These come in both single mode and multimode variants to suit the application purpose. They can also be either metal or plastic housing and either simplex or duplex configuration.

An optical fibre adapter or uniter is used to mate two connectors together, usually mounted in a distribution panel or wall box. In most cases it is the critical part of the system that aligns the ferrule part of the connectors keeping the fibres in perfect alignment.



## Ordering Information

- ▶ **SC-ST singlemode duplex**
  - 1020-23SDX2L001 (For Metal)
  - 1020-23SDXLL001 (For Blue Plastic)
  
- ▶ **SC-ST multimode duplex**
  - 1020-23MDX2E001 (For Metal)
  - 1020-23MDXEE001 (For Beige Plastic)

